



# Community Action ANNUAL REPORT 2016



FIGHTING THE WAR ON POVERTY SINCE 1964



**Riverside  
University**  
HEALTH SYSTEM  
Public Health

# BOARD OF SUPERVISORS



**Kevin Jeffries**  
First District Supervisor



**John Tavaglione**  
Second District Supervisor



**Chuck Washington**  
Third District Supervisor



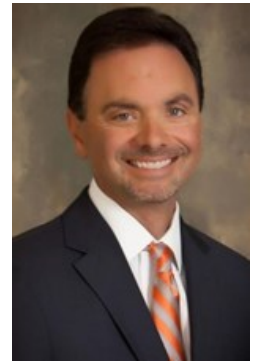
**John J. Benoit**  
Fourth District Supervisor



**Marion Ashley**  
Fifth District Supervisor



**Jay Orr**  
County Executive Officer



**Zareh Sarrafian**  
Riverside University  
Health System

## COMMUNITY ACTION PARTNERSHIP LOCATIONS

### COMMUNITY ACTION RIVERSIDE

2038 Iowa Ave. Suite B-102  
Riverside, CA 92507

### HEMET SERVICE CENTER

749 N. State St.  
Hemet, CA 92543

### COUNTY ADMINISTRATIVE CENTER

260 North Broadway  
Blythe, CA 92225

### MECCA WIC/CAP

49127 66th Avenue  
Mecca, CA 92254

### DESERT HOT SPRINGS WIC/CAP

14320 Palm Drive  
Desert Hot Springs, CA 92240

### PHONE

CAP Riverside Office: 951.955.4900  
Toll Free: 800.511.1110  
Hearing Impaired: 951.955.5126

### EMAIL

[info@capriverside.org](mailto:info@capriverside.org)



# TABLE OF CONTENTS

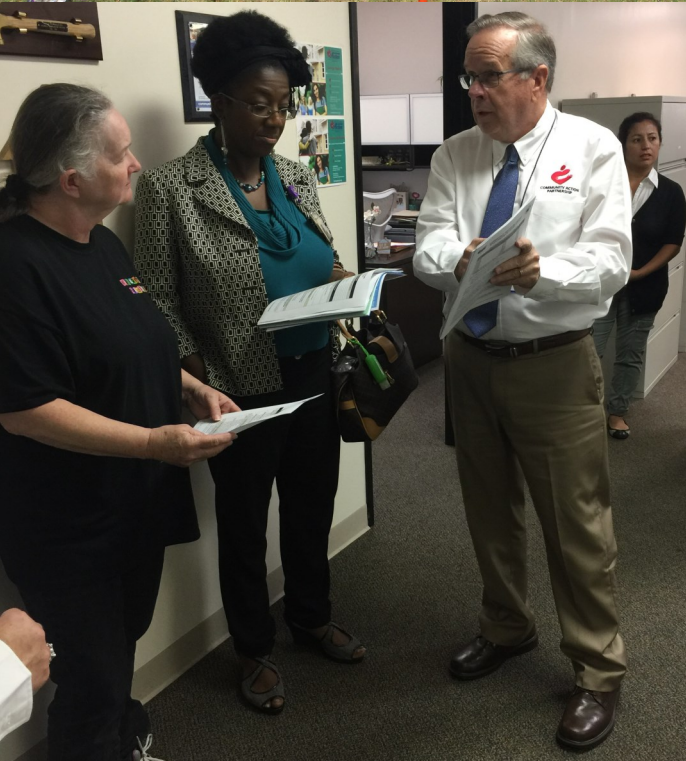
Introduction	2
Messages from Leadership	3
Community Action Commission	4
Mission and Promise	5
Riverside County Poverty	6
Organization Chart	8
Achievements	9
Statistical Information	10
Energy Programs	12
Cool and Warm Centers	14
Dispute Resolution/Mediation Programs	15
Savings Match Programs	16
Youth Programs	17
Volunteer Income Tax Assistance Program	19
Volunteers & Partners	20



# INTRODUCTION

The County of Riverside Community Action Partnership works to strengthen, promote, represent and serve its community to assure that the issues of poverty are identified and addressed. Community Action Partnership was created as part of the Economic Opportunity Act of 1964, commonly referred to as the “War on Poverty,” for the purpose of tailoring services to meet the needs of individuals and families by helping low-income residents escape poverty and achieve economic stability.

Community Action partners with public and private entities across the county and administers a wide array of programs designed to eliminate poverty. In 2016, Community Action provided services and education to over 71,000 residents.





# MESSAGES TO THE COMMUNITY

## Sarah Mack

Director, Department of Public Health



The goal of Riverside University Health System-Public Health is to provide services that help improve the lives and health of Riverside County residents, and the work of the County of Riverside Community Action Partnership is a great example of that goal being met.

Through the efforts of the Community Action Partnership staff and volunteers, tens of thousands of Riverside County residents have been served and

their lives improved.

Some of the work involved improvements to the physical environment, like those offered through the weatherization services program that helps protect homes and apartments during warm and cold weather. There is a financial benefit for residents who use the Volunteer Income Tax Assistance program, which in 2016 exceeded its goals on tax returns processed and helped bring Earned Income Tax Credit dollars back to clients and the communities where clients live.

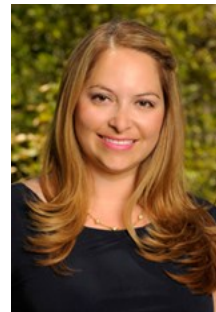
There are Community Action programs that serve the young, seniors, veterans and others who may be struggling to get by. The programs are as varied as the residents Community Action serves.

Lastly, Community Action changed its organizational structure to increase efficiencies throughout the organization, and recently became part of Riverside University Health System-Public Health.

Congratulations to the Community Action staff and Commission for their work and commitment to the residents of Riverside County.

## Brenda Salas Freeman

Executive Director, Community Action Partnership



Thank you for taking time to review our 2016 annual report. Each and every day your Community Action Partnership serves those in need of assistance across the 7200 square miles of Riverside County.

Today Riverside County is the nations 10th most populated county. For the better part of a decade our county has been the fastest growing in both the state and nation. However, we need Community Action Partnership programs and services more than ever before.

This next year we will continue to incorporate education and training while creating programming that helps people while changing lives. It is rewarding to lead the Community Action Partnership and a team of dedicated professionals. Please read the report and feel free to contact us at [capriverside.org](http://capriverside.org)

# COMMUNITY ACTION COMMISSION

Dale E. Cook Jr.

Chair, Community Action Commission



As we reflect upon this past year, the Commission leadership and members are amazed by all that the County of Riverside Community Action Partnership accomplished in 2016. This report chronicles the myriad of our successes.

The Commission and its Committees worked diligently to ensure accountability for the funds received from our partner funders, while maintain that all of our practices were sound and transparent. The unrelenting dedication of our Staff and Volunteers who served in these capacities did not go unnoticed. We appreciate all of their extra efforts provided in the communities and neighborhoods throughout the County served by Community Action.

As you will read, our programs have a common thread of supporting individuals and families struggling with poverty and their financial lives. By way of these programs, we assisted clients as they move out of poverty to a position of overall economic well-being.

On behalf of the Commission, I would like to thank the Riverside County Board of Supervisors for their unyielding commitment, and that of all our Partners *'alleviate poverty and promote self-sufficiency'*.

---

The Community Services Block Grant Reauthorization Act of 1998 requires that private nonprofit entities and public organizations administer their CSBG program with tripartite boards that “fully participate in the development, planning, implementation and evaluation of the program to serve low-income communities.” Our agency complies with the CSBG Act through our Community Action Commission. Our Commission is comprised of public, private and low-income representatives from the community. The Commission meets 10 times per year excluding August and December.

## LOW-INCOME SECTOR

Teresa Hunter, District 1  
Marvin Powell, Jr. District 2  
Mary Morse, District 3  
Ernesto C. Rosales, District 4  
Ernie Saldana, District 5 (Secretary)

## PRIVATE SECTOR

Tiffany Baker, Social Services, (Vice Chair)  
Josh Dunaj, Education  
Bruce Kulpa, Housing  
Gail Ousley, Social Services  
Terri Vise, Health Care

## PUBLIC SECTOR

Tonya Burke, Councilmember, Perris  
Dale Cook, Mayor’s Designated Representative, Palms Springs (Chair)  
George Moyer, Mayor, Banning  
Betty Sanchez, Councilmember, Coachella  
Mike Soubirous, Councilmember, Riverside





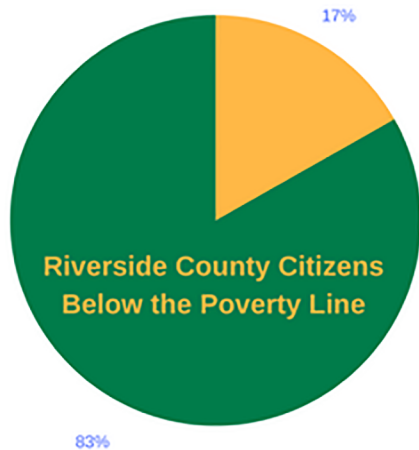
# MISSION STATEMENT

The County of Riverside Community Action Partnership strives to eliminate poverty by facilitating opportunities towards self-sufficiency through education, wealth building, advocacy and community organization.

# PROMISE

Community Action changes people's lives, embodies the spirit of hope, improves communities, and makes America a better place to live. We care about the entire community and are dedicated to helping people help themselves and each other.

# A look at the numbers...



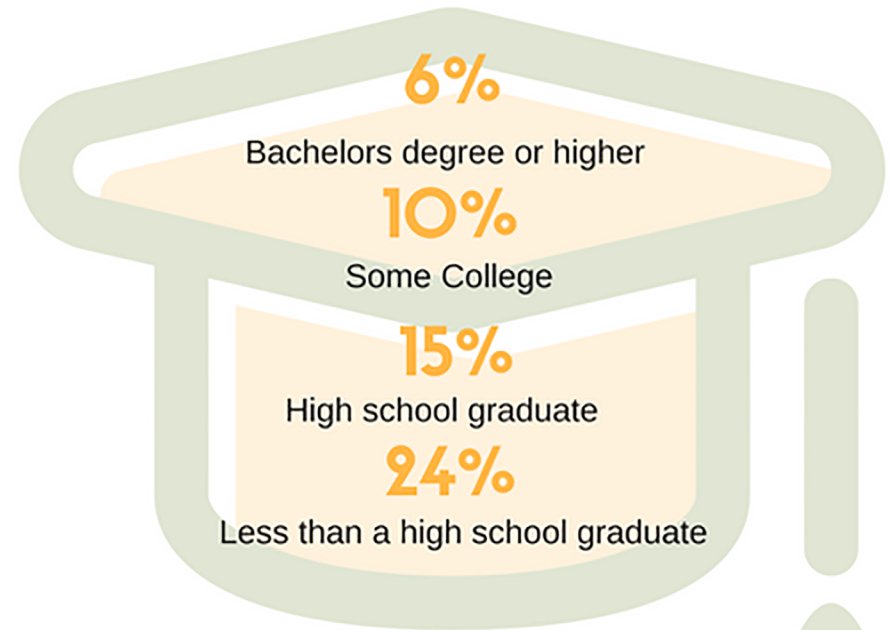
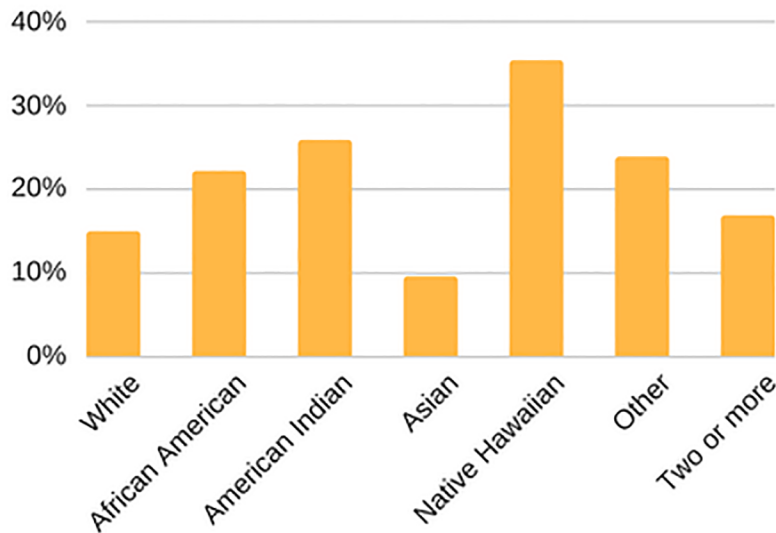
16.8% of the population, nearly **380,000 people**, have incomes below the federal poverty line.



**1 in 6**

Of all people in Riverside County live in poverty..

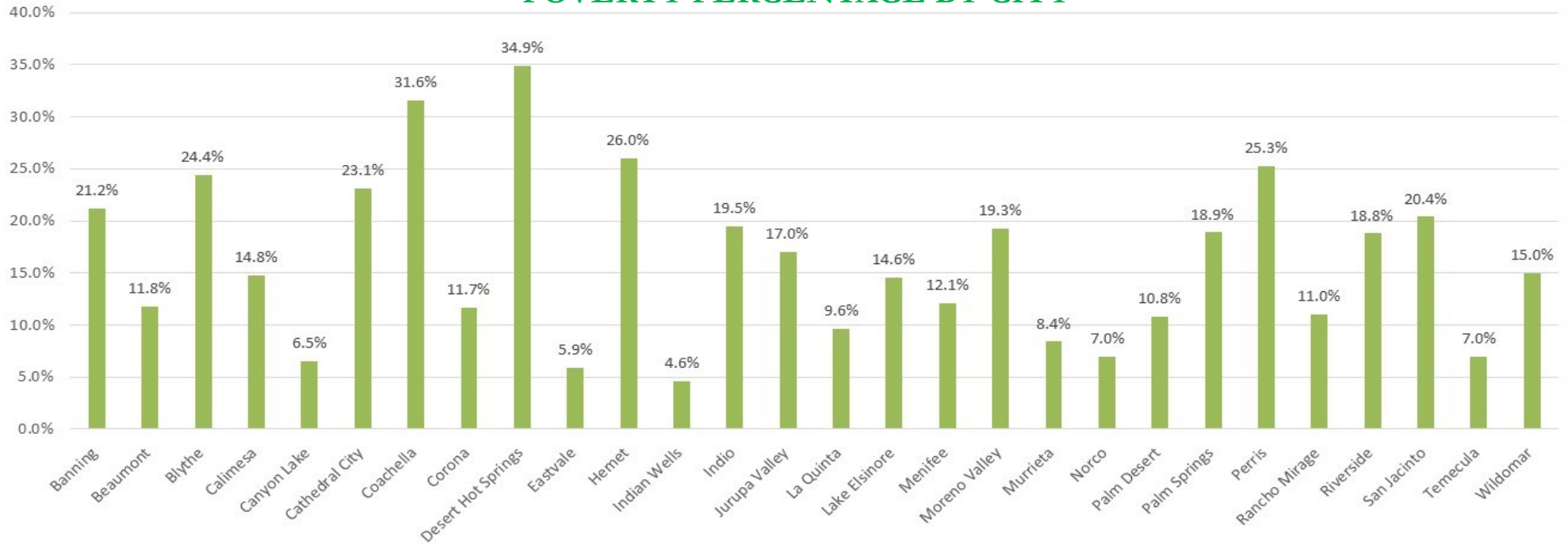
Poverty Rate (Race/Ethnicity)



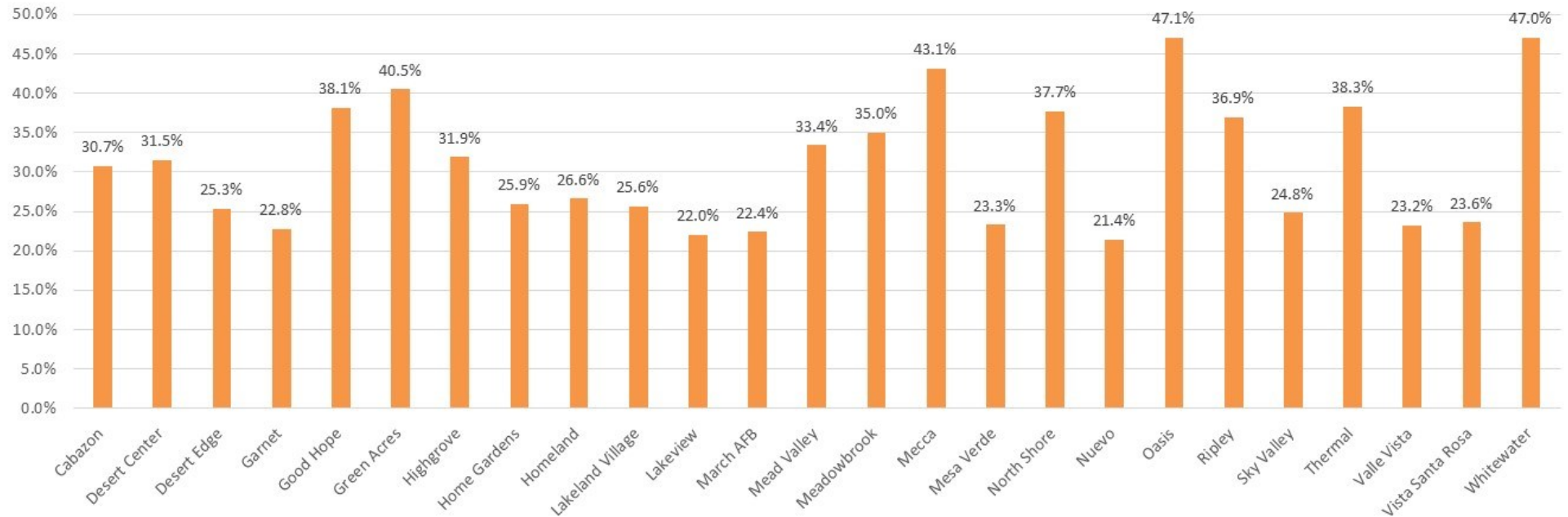
Poverty Rate (Education)



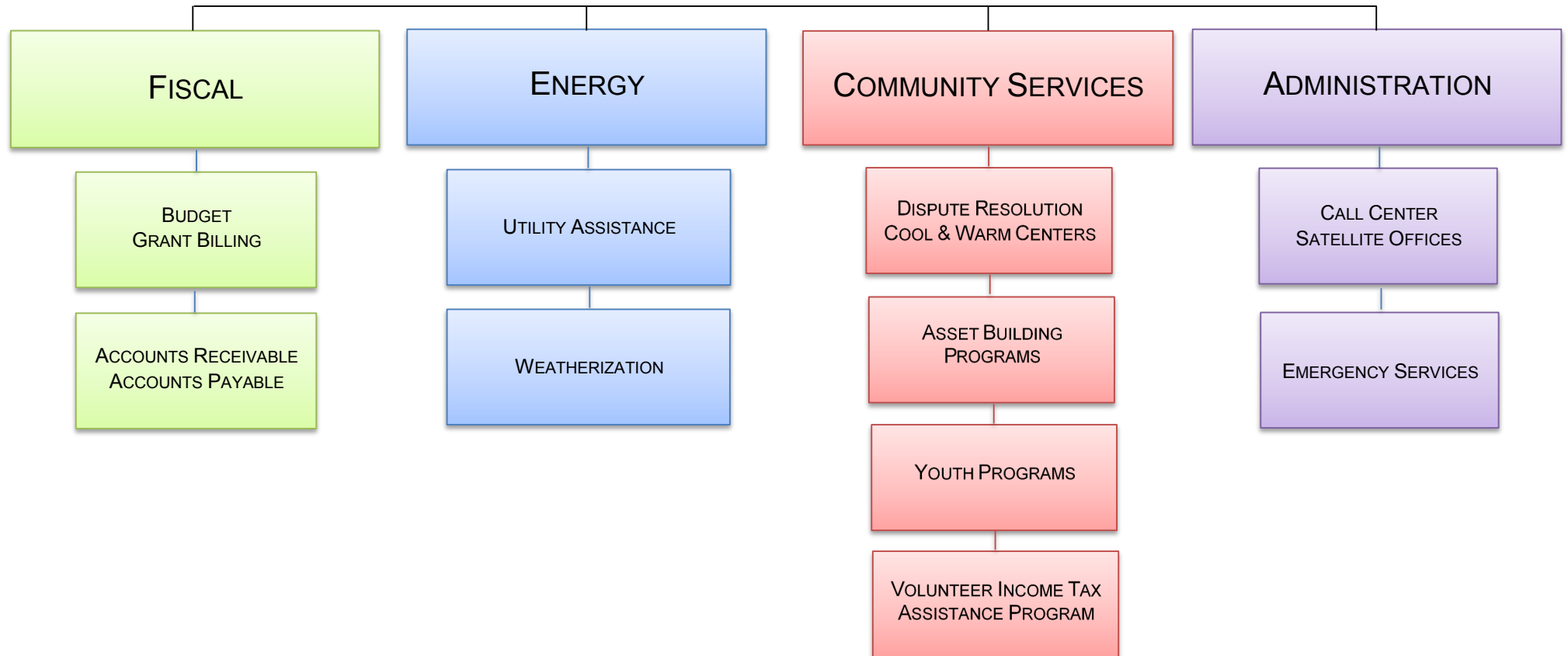
## POVERTY PERCENTAGE BY CITY



## POVERTY PERCENTAGE BY UNINCORPORATED AREA



# COMMUNITY ACTION DIVISION CHART





# ACHIEVEMENTS IN 2016



**Met CSBG Organizational Standards and funding requirements.**



**Expanded energy programs into solar water heaters.**



**Revised Commission by-laws.**



**Creation of Call Center, Online/Phone Appointment Scheduler, Purchased public computers for bill/education information.**



**Implemented new laptop Savings Program.**

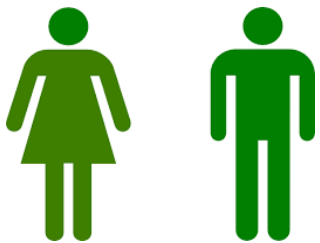


**Launched several satellite offices to better serve customers in rural areas of Riverside County.**

# STATISTICAL INFORMATION

Community Action receives grants from federal, state and local sources. Community Action is dedicated to growing its revenue and making every dollar count through use of volunteers and partnerships in the community.

## COMMUNITY ACTION TACKLES POVERTY BY SERVING LOW-INCOME INDIVIDUALS AND FAMILIES.



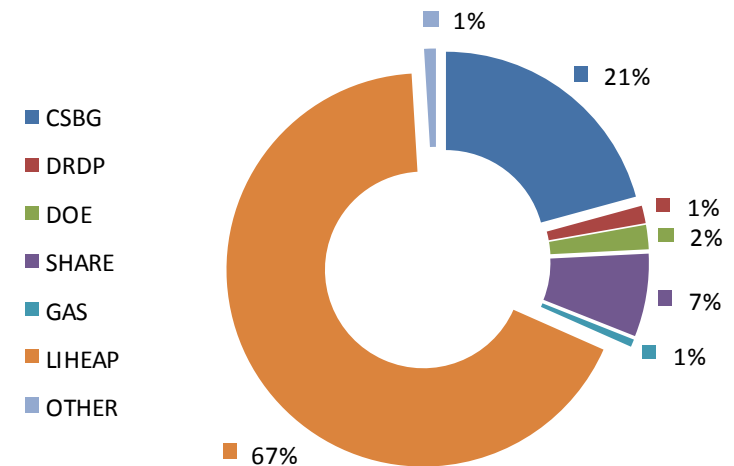
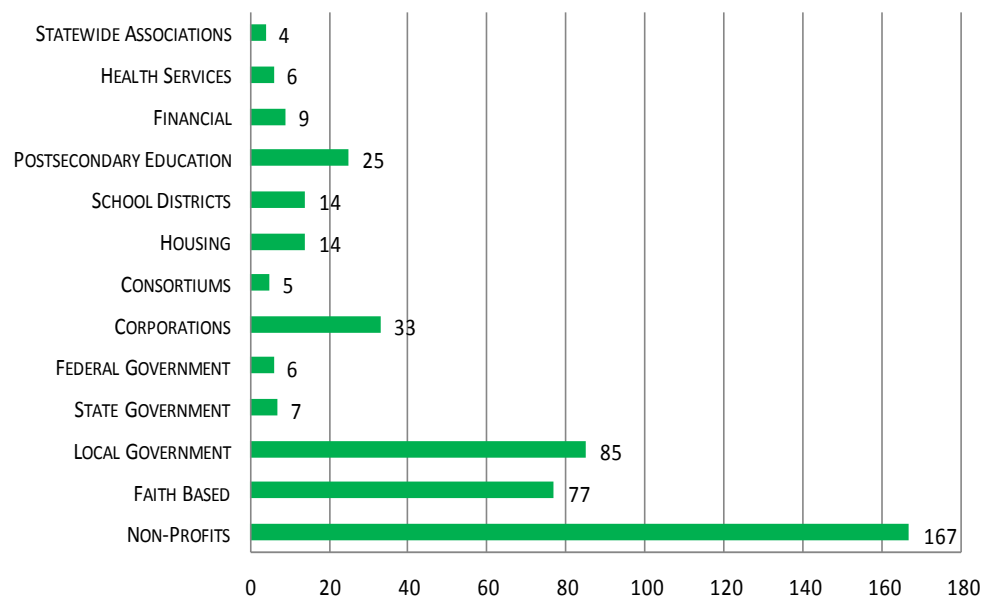
-71,553 INDIVIDUALS AND FAMILIES SERVED IN 2016.

-OVER 46,000 VOLUNTEER HOURS IN 2016.



## FUNDING SOURCES

### TOTAL # OF PARTNERSHIPS IN 2016 IS 456



CSBG - Community Services Block Grant  
 DRDP - Dispute Resolution  
 DOE - Department of Energy  
 SHARE - Sharing Households Assist Riverside Energy  
 GAS - Southern California Gas Company  
 LIHEAP - Low-Income Home Energy Assistance Program  
 OTHER - Foundation for Economic Security, Department of Public Social Services, County of Riverside

# STATISTICAL INFORMATION

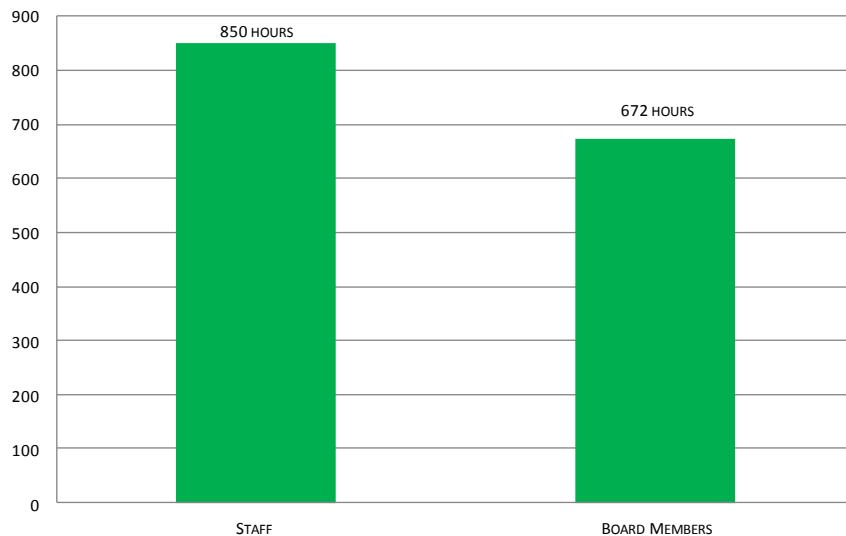
Community Action is service-oriented and takes pride in providing customers with accurate information and resources throughout the community in the fight against poverty. We value professional growth and development among our staff and our Community Action Commissioners.

**COMMUNITY ACTION PROVIDES ACCURATE INFORMATION TO CUSTOMERS IN A TIMELY MANNER.**



**< 2:00 Minutes**  
Average wait time  
**38,688 Calls**  
Calls received in 2016

## STAFF & BOARD TRAINING HOURS IN 2016.



\*Includes meetings, trainings, conferences and seminars





# ENERGY PROGRAMS



## **UTILITY ASSISTANCE**

The Utility Assistance program is a one-time assistance program that helps low and moderate income individuals and families with utility payment assistance. Funding for the program is provided by the Federal Low Income Home Energy Assistance Program (LIHEAP). The recipients of utility payment assistance also receive energy conservation education.

## **ENERGY EDUCATION**

Community Action requires that all utility payment assistance and weatherization customers receive energy conservation education. The purpose of the energy education is to teach the customer about the costs of energy, the benefits of energy conservation measures and practices and available resources, such as rebates, appliance safety and discount programs.

## **ENERGY CRISIS INTERVENTION PROGRAM (ECIP)**

The program consists of gas and electric bill payments, wood, propane and oil payment and furnace repair and replacement on behalf of those households identified in a crisis situation. A payment is made when an applicant receives a 24-hour to 48-hour disconnection notice, or other utility service disconnection notice that would involve a life threatening and/or emergency situation; or the applicant's utility services have been terminated; or the applicant requires assistance with establishing a new account. Customers whose utilities are included in their rent do not qualify for ECIP.

# ENERGY PROGRAMS

## **WEATHERIZATION ASSISTANCE**

The Weatherization Assistance Program is a federally funded low-income residential energy conservation program. The program provides free home energy conservation services to low-income Riverside County homeowners and renters. These services reduce energy use and lower utility bills, creating a safe and more efficient household. Energy-saving services include measures such as attic insulation, caulking, water heater blanket, heating/cooling system repair or replacement and other energy-efficient measures. A trained inspector assesses eligible dwellings for measures needed. A typical inspection includes blower door testing for air leakage, combustion appliance testing for safety and efficiency and a health and safety inspection.

## **SHARING HOUSEHOLDS ASSIST RIVERSIDE ENERGY (SHARE)**

SHARE is funded by the city of Riverside and is specifically for Riverside Public Utilities customers. In order to leverage services received, SHARE customers may also apply for LIHEAP. SHARE eligibility is determined by different income guidelines than LIHEAP and should be submitted in person.

## **CALIFORNIA ALTERNATIVE RATES FOR ENERGY (CARE)**

The CARE program provides a monthly discount of 20 percent or more on the electric or gas bill for individuals who meet the income eligibility guidelines, hold the utility account in his/her name and are qualified customers.

**34,501 customers were provided with utility assistance in 2016.**

**1,728 customers were provided with weatherization services in 2016.**

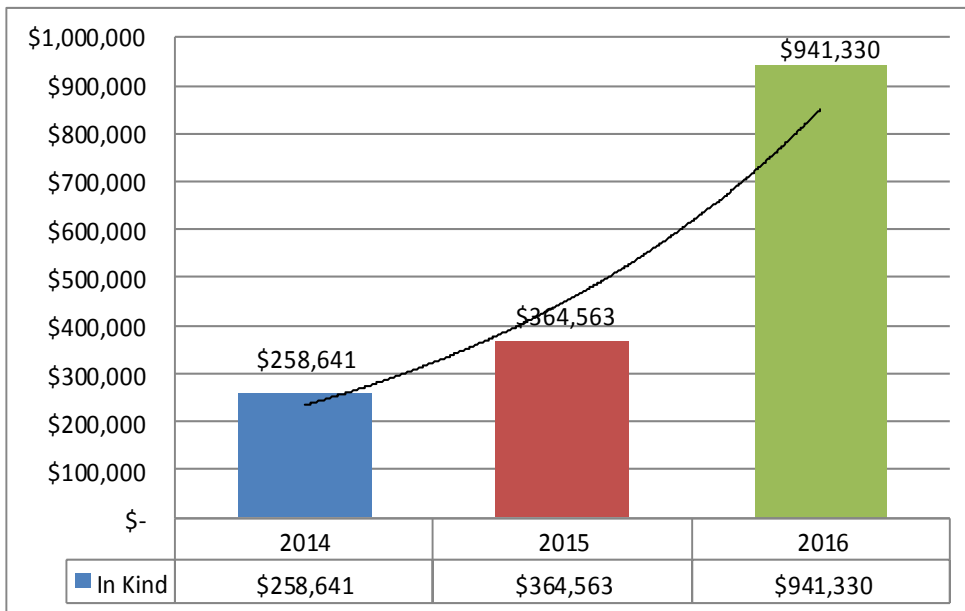
**36,229 customers were provided energy education in 2016.**





# COOL & WARM CENTERS

Community Action facilitates cool and warm centers throughout the region that provide a safe place for people, especially those most vulnerable, to escape extreme seasonal temperatures and save money on their utility bills. Cool Centers are active Jun. 1 through Oct. 15, and Warm Centers are active Dec. 1 through Mar. 31. In 2016, there were 56 Cool Centers and Warm Centers operating throughout Riverside County, serving 14,979 visitors.



The Cool & Warm Centers receive in-kind value in the form of donations, space rent and volunteers.

**Cool Center  
Attendance 14,665**

**Warm Center  
Attendance 314**



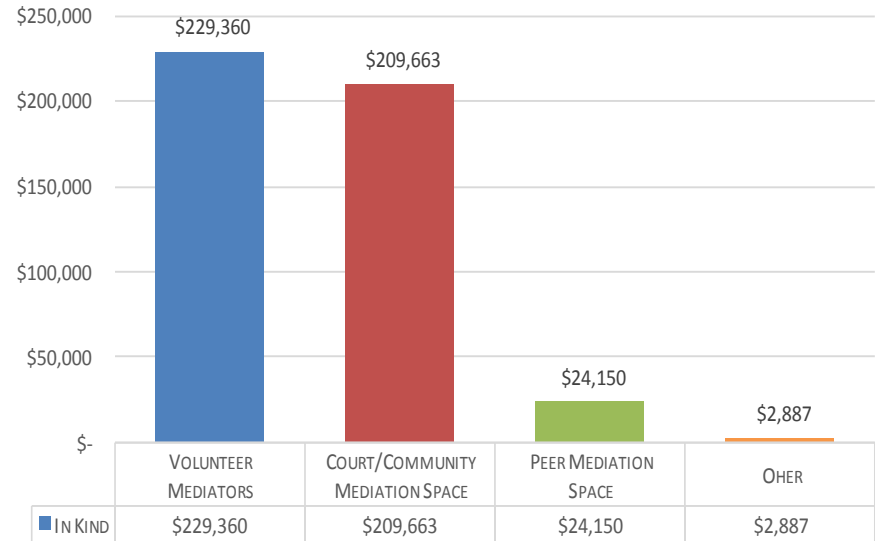


# DISPUTE RESOLUTION PROGRAM

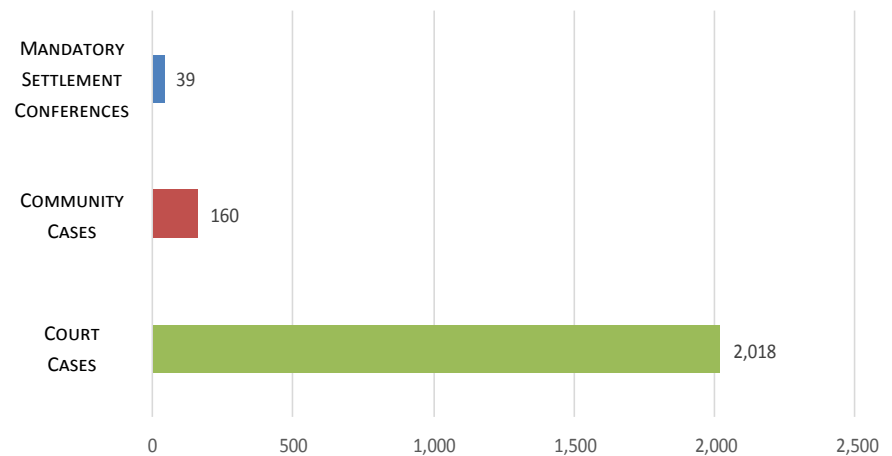
The Dispute Resolution Program provides mediation services and conflict resolution workshops and training to students and adults. Mediation is conflict resolution assisted by a neutral third party achieved through active listening, understanding, exploration of options and compromise. Mediation is a win-win alternative to small claims court. Through the mediation process, the individuals involved in a dispute work out their own solutions with the help of a mediator. Mediation saves money and time, and allows for a workable relationship, whereas, the court procedure is time-consuming, expensive and places the parties in adversarial positions. Additionally, Community Action offers Peer Mediation workshops to various school districts to help the youth resolve conflict and become peace ambassadors.



Students receiving Peer Mediation training.



Total Volunteer Mediators in 2016 was 775 contributing 11,468 hours.  
Total in-kind for the Dispute Resolution Program in 2016 was **\$466,060**.



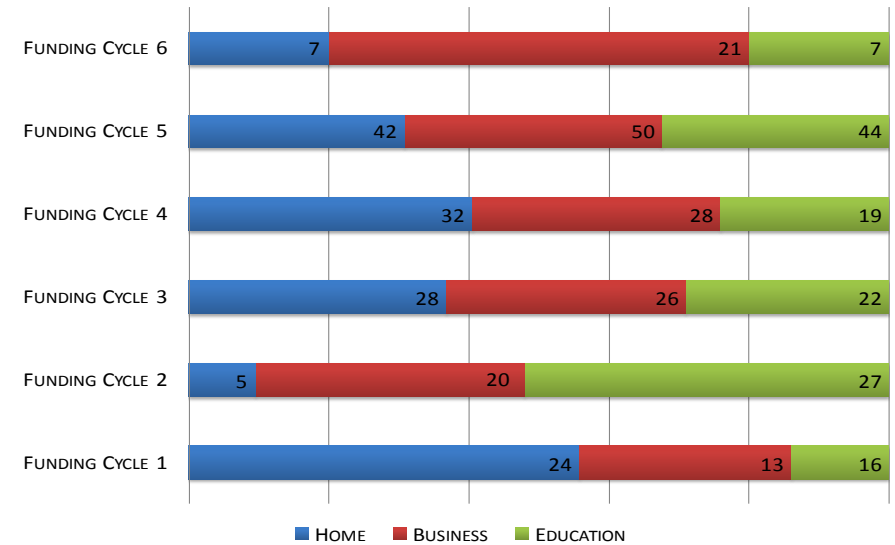
Total cases mediated in 2016 was 2,217

# INDIVIDUAL DEVELOPMENT ACCOUNT (IDA)

The Individual Development Account (IDA) Program is a matched savings incentive program for residents of Riverside County seeking economic stability. Participants must have income to be eligible for the program. Participants attend a series of mandatory and elective workshops to increase financial knowledge as well as to become better prepared to reach their goal. Participants open a savings account, contribute to reach the goal of \$1,000 in savings to be matched with \$4,000, and choose to pursue one of the three goals: purchase a first home, college or vocational school or start or expand a business.



Community Action's Individual Development Account program offers families the opportunity to obtain financial literacy skills through completing workshops and provides a savings match incentive to acquire assets and become financially independent. In this case, both parents completed the program and were able to purchase a first home for their family. Congratulations to the Diaz family!



This chart reflects the funding cycles since the inception of the IDA program. There have been over 400 individuals who have graduated the program. Category breakdown is reflected above.





# YOUTH PROGRAMS

## PROJECT LINKING EDUCATION, ADVOCACY AND DEVELOPMENT (LEAD)

Project LEAD is a program that recruits, trains and deploys mentors and tutors to assist students enrolled in after school programs at middle schools. Project LEAD provides mentoring and tutoring through character development activities such as recreation, crafts, arts and academic coursework.

## PRE-APPRENTICESHIP PROGRAM

The Pre-Apprenticeship Program is a workplace mentoring program that matches high school juniors and seniors with small businesses throughout the county. The youth are provided an opportunity to learn marketable job skills while still attending high school.



“I am now a preschool assistant at a child care center and I feel confident taking the next step in my career because of all that I learned as a Youth Coordinator.”

~Project LEAD Youth Coordinator 2015-2016~



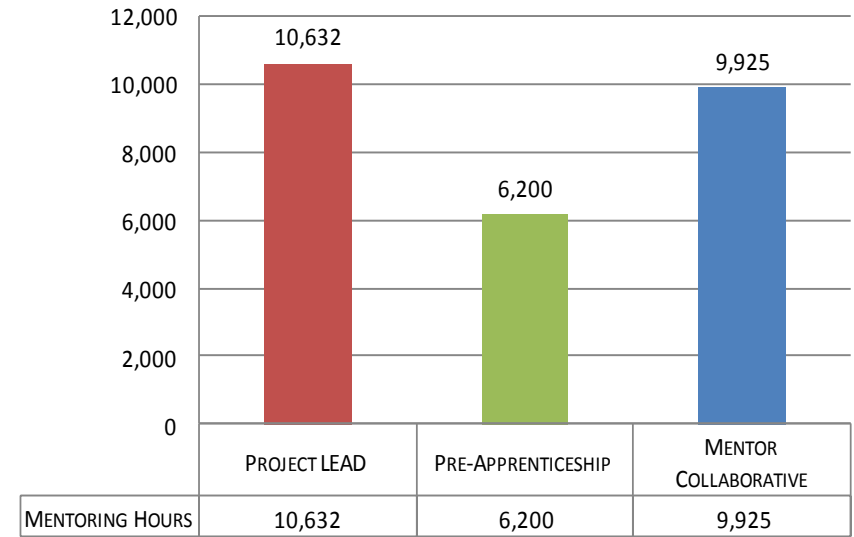
# YOUTH PROGRAMS

## RIVERSIDE COUNTY MENTOR COLLABORATIVE

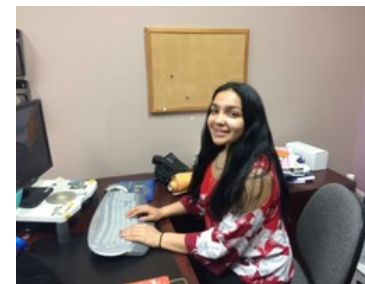
The Riverside County Mentor Collaborative (RCMC) is a countywide partnership of more than 50 mentoring programs that assist, support and encourage safe, positive mentor-protégé connections. RCMC delivers mentor training workshops, promotes literacy, provides technical assistance, maintains a comprehensive directory of mentor programs in Riverside County and sponsors a telephone referral hotline.



The 2016 Annual Riverside County Mentoring Fair took place in Hemet.



Total Mentoring Hours In-Kind Value of **\$718,960.59**



Our student completed 520 hours of work experience while attending high school. She comes from a single parent home and understands the struggles that her mom goes through to provide her and her little brother basic needs.

She joined the Pre-Apprenticeship program because she wanted to help her mom provide for the household while gaining work experience. She improved her grades in school and achieved a 3.9 GPA. Congrats!

# VOLUNTEER INCOME TAX ASSISTANCE

The Volunteer Income Tax Assistance (VITA) program provides FREE tax preparation services to low to moderate income filers. During tax season, there are free sites across Riverside County. All sites are staffed by IRS Certified Volunteers.

Those assisted by the VITA Program:

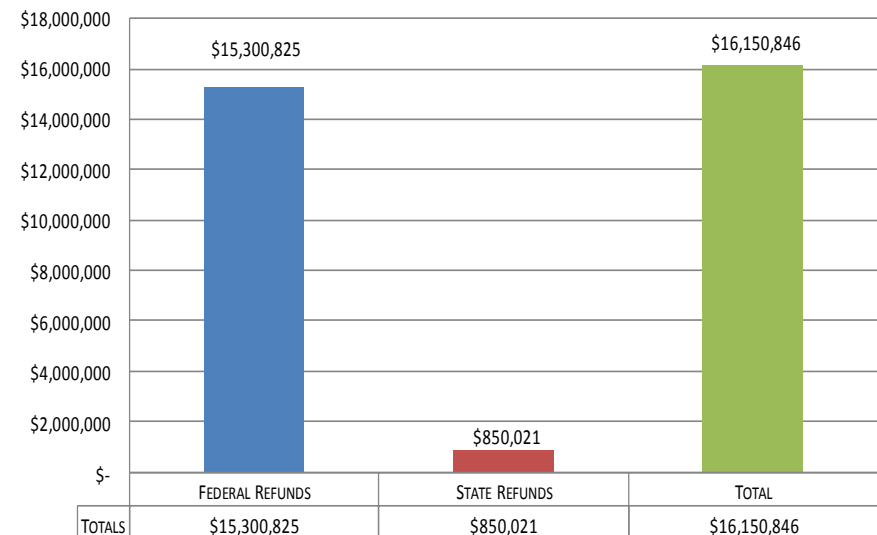
- ◆ Taxpayers who file 1040, 1040A and 1040EZ
- ◆ Low to moderate income individuals and families
- ◆ Person with disabilities
- ◆ Senior Citizens

## Achievements in 2016

- ◆ 125 Volunteers
- ◆ In-Kind Equivalent of \$684,495
- ◆ Over 5,700 Volunteer Hours



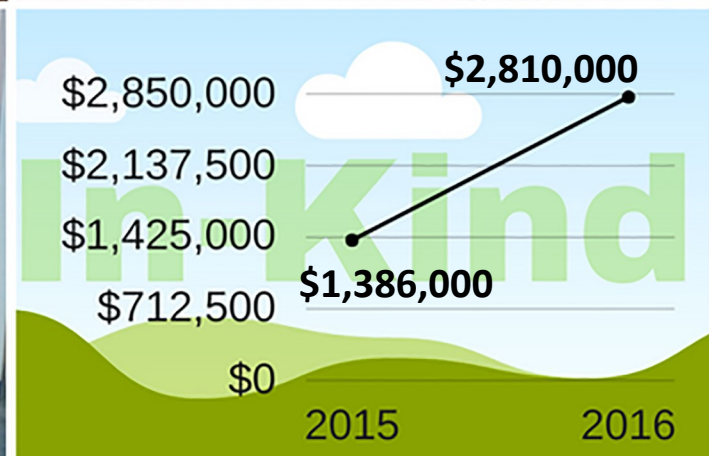
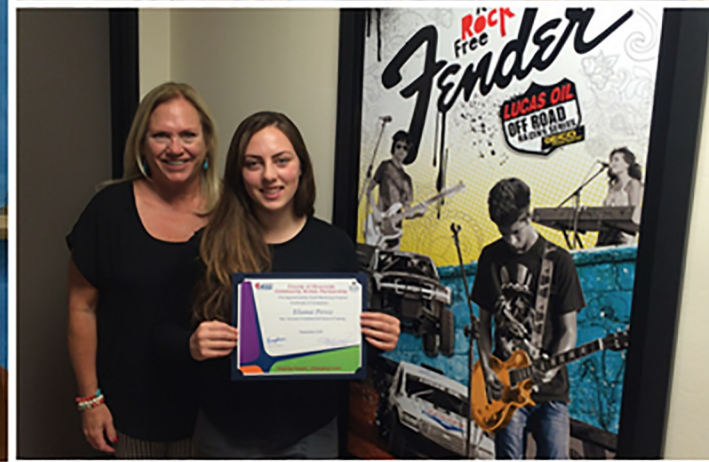
The VITA CAP Mobile prepares tax returns for residents.



VITA and its coalition processed 14,503 tax returns bringing back **\$16,150,846** into the community.



# THANK YOU VOLUNTEERS





# THANK YOU PARTNERS

ABC HOPE	Casa Blanca Library	Desert Sands Unified School District	La Sierra Community Center	Operation Safe House	Santiago High School
Adam Ruiz	Cathedral City High School	Dorothy McElhinney Middle School	La Sierra Senior Center	Orange Grove High School	Seaview Elementary School
Albert A. Chatigny, Sr. Community Center	Cathedral City Salvation Army	DVBE Insurance	Lake Elsinore Senior Center	Orange Terrace Community Center	Senior Citizens Service Center of Temecula-
Altura Credit Union	Cathedral City Senior Center	Dwight Eisenhower Elementary School	Lake View Chapel	Our Lady of Perpetual Help Catholic	Murrietta
Alvord Unified School District	Catholic Charities of Moreno Valley	Economic Development Agency	Lakeland Village Community Center	Our Lady of Perpetual Help School	Shivela Middle School - 1st class
American Legion	Catholic Charities of Indio	Eddie Dee Smith Senior Center	Lakeview Chapel	Our Lady of Solitude Catholic Church	Skyview Elementary School
American Red Cross	Catholic Charities of Murrieta	El Cerrito Middle School	Las Palmitas Elementary School	Painted Hills Middle School	Smooth Transition, Inc.
Anointed Vessel Productions	Center for Employment Training	Eleanor Roosevelt High School	Louis Robidoux Library	Palm Desert Community Center	Southern California Edison Company
Anza Community Building, Inc.	Cesar Chavez Academy	Empower Youth (Youth Opportunity Center)	March Air Field Meseum	Palm Desert High School	Southern California Gas Company
Anza Community Hall	Cesar Chavez Community Center	Esperanza Youth & Family Center	Martha's Village and Kitchen	Palm Springs Court	Southwest Justice Center
Anza Gas	Park	Fair Housing Council of Riverside County	Martin Luther King Jr. High School	Palm View Elementary	Springboard Nonprofit Consumer Credit
Arbor Win Center (Youth Opportunity Center)	Cesar Chavez Elementary School	Family Service Association	Mary Phillips Senior Center	Palms Elementary	Management, Inc.
Area Recreation & Park District	Chaparral High School	Fender's Museum/Kids Rock	McSweeney Elementary School	Palo Verde High School	St John's Lutheran Church
Arlanza Community Center	Cielo Vista Charter School	Frank Augustus Miller Middle School	Mead Valley Community Center	Path of Life Ministries – Kids of Promise	CA, Community Services and Development
Arlanza Elementary School	Circle City Center	Galilee Center Inc.	Mead Valley Family Resource Center	Program	Stater Bros Distribution Center
Arlington Temporary Services	City of Banning	Girls Scouts of San Gorgonio Council	Mead Valley Senior/Community Center	Patricia Beatty Elementary School-Group 1	Stratton Community Center
Banning Court	City of Beaumont	Glen Avon Library	Mecca Boys & Girls Club	Patricia Beatty Elementary School-Group 2	Stratton Community Center - Bordwell Park
Banning High School	City of Riverside Parks & Recreation	Global Education Systems Alliance	Mecca Elementary School	Perris Family Resource Center	Superior Court of California County of Riverside
Banning Senior Center	City of Riverside Utilities	Good Hope Community Center	Mecca Family and Farm Worker Service Center	Perris Senior Center	Temecula Community Center
Beaumont Senior Center	City of Riverside Youth Opportunity Center	Grace International Educational Consulting	Mecca WIC/CAP Office	Perris Valley Family Resource Center	Temecula Senior Center
Bell Mountain Middle School	Clearwater Elementary School	Habitat for Humanity	Menifee Valley Community Cupboard	Peter Pendleton Elementary School	Temecula Valley High School
Big Brothers Big Sisters of the Desert	Cloverdale Elementary School	Hemet Service Center	Mesa Verde Roy Wilson - Community Center	Rancho Calimesa Mobile Home Park	The Cathedral Community Center
Big Brothers Big Sisters of the Inland Empire	Coachella Senior Center	Hemet Simpson Center	Mission Middle School	Rancho Calimesa Mobile Home Ranch	The Concern
Blythe Community Center	Coachella Valley High School	Home Gardens Academy	Mizell Senior Center	Rancho Community Church Family Life Center	The Salvation Army
Blythe Recreation Center	Coachella Valley Housing Coalition	Hope Collaborative	Moreno Valley College	Rancho Verde High School	The Well In The Desert
Blythe Senior Center	Coachella Valley Rescue Mission	Hunt Park	Moreno Valley Community & Recreation Center	Reach Out Strengthening Communities	Church
Bobby Bonds Park	Coachella Valley Unified School District	Idyllwild Help Center (PROPANE)	Moreno Valley Court	Regional Access Project (RAP) Foundation	Theodore Roosevelt Elementary
Bobby Duke Elementary	Coachella Valley Women's Business Center	Idyllwild Town Center	Moreno Valley High School	Reid Park	Thermal Migrant Head Start
Bordwell Park	Coachella Valley Women's Business Center	Indio Court	Moreno Valley Library	Renaissance Pet Resort	Thermal Senior Center
Borrego Health Center	Colorado Senior/Community Center	Indio Senior Center	Moreno Valley Senior Center	Renaissance Pet Resort & Spa	Thermal Senior Community Center
Boys & Girls Club of Coachella Valley Indio	Colorado River Senior Center	Inland Empire Health Plan	Moreno Valley Youth Opportunity Center	Renck Community Center	Tomas Rivera Middle School
Boys & Girls Club of Coachella Valley Mecca	Community Access Center	Inland Empire Women's Business Center	Mount San Jacinto College	Renek Community Center - Hunt Park	Toro Canyon Middle School
Boys & Girls Club of Coachella Valley Palm Desert	Community Connect 2-1-1	James A. Venable Community Center	Mountain Vista Elementary School	Riverside City College	Torres Martinez Community Center
headquarters	Community Food Pantry	James O. Jessie Desert Highland Unity Center	Mt. San Jacinto High School	Riverside County Child Care Consortium	UECC Americorps
Boys & Girls Club of Coachella Valley/ Coachella	Community Settlement Association	Janet Goeske Center	Murrieta Court	Riverside County Department of Public Health	US. Foods
Boys & Girls Club of Coachella Valley/Desert Hot Springs	Corona Senior Center	Jerry Rummonds Senior Community	Murrieta Senior Center	Riverside County Fire Department	Valle Del Sol Elementary
Quinta/Mecca	Corona/Norco Settlement House	JobCorps	Murrieta Valley High School	Riverside Superior Courts	Valley Restart Shelter
Boys & Girls Club of Desert Hot Springs	Country Village Senior Services	Joselyn Senior Center	My Learning Studio	Riverside Unified School District	Valley-Wide Rec & Park
Boys and Girls Club of Coachella Valley	Credit. Org	Joslyn Center	National Oceananic and Atmospheric Administration	Rose M. Eldridge Senior Center	Villegas Park
Bridges Of Hope	Dales Senior Center	Joyce Jackson Community Center Nichols Park	Weather Service	Rubidoux Community Resource Center	Wilma Gudjemian
Bryant Park	Desert Aids Project	Jurupa Community Center - Area Recreation &	Norco College	Rubidoux Family Resource Center	Walgreens
Cahuilla Desert Academy Junior High	Desert Hot Springs Family Resource Center	Park District	North Shore Beach & Yacht Club	Rubidoux Youth Opportunity Center	West Shores Middle/High School
CAL Fire Riverside County Fire Dept	Desert Hot Springs Senior Center	Kay Cenicerros Senior Center	Norton Younglove Community Center	Rummonds Senior Center	West Valley High School
Calimesa Senior Center	Desert Hot Springs WIC/CAP Office	KERU /Escuela De La Raza Unida	Oak Grove	Ruth Lewis Community Center	Westside Elementary School
Carolyn E. Wylie Center for Children, Youth & Families	Desert Recreation Center	La Quinta Senior Center	Oasis Perris Youth Center	San Felipe Migrant Center	Wilson Elementary School
	Desert Recreation District	La Quinta Wellness Center	Olive Crest	San Gorgonio Middle School	Ysmael Villegas Community Center
				San Jacinto Senior Center	Ysmael Villegas Community Center Villegas Park

Community Action Partnership of Riverside County could not do its work without the support and contributions of our partners.  
Thank you for your commitment of service to the community.



**In Memory of John J. Benoit (1951-2016)**

On December 26, 2016, members of the Board of Supervisors lost a colleague and friend, and Riverside County residents lost a man who had served them for almost 50 years.

Supervisor John J. Benoit was a doer, a thinker, a planner and problem-solver who just wanted to get things done for his Coachella Valley and for all Riverside County residents.

He was most proud of being called a public servant. He was honored to serve and represent the community in which he and his family lived.

His leadership and dedication to the residents of Riverside County will be sorely missed.



**In Memory of Janice Haskin (1951-2016)**

Appointed from 2002 – 2013

Private Sector United Way of the Inland Valleys (District 5)



2038 Iowa Avenue, Suite B-102  
Riverside, CA 92507  
951.955.4900 or 800.511.1110  
[www.capriverside.org](http://www.capriverside.org)

